



CABERNET 2014: 4th International Conference on Managing Urban Land

Closing remarks

Professor Paul NATHANAIL CABERNET & University of Nottingham

Tailored & Sustainable Redevelopment towards *Zero Brownfields*
Final Conference of the EU FP7 Project “HOMBRE” In cooperation with the EU FP 7 Projects
“Greenland”, “TIMBRE” & “GLOCOM”,



Brownfields as latent assets

- ☺ Provide flexibility
- ☺ Keep the urban land use cycle turning
- ☺ Available for interim uses
- ☺ Help prevent sprawl
- ☹ You can have too much of a 'good' thing

Brownfields are sites that:

- have been **affected** by former uses of the site or surrounding land;
- are derelict or **underused**;
- are mainly in fully or partly developed **urban** areas;
- require **intervention** to bring them back to beneficial use; and
- **may** have real or perceived contamination problems



Global Partners in Contaminated Land Management

GLOCOM



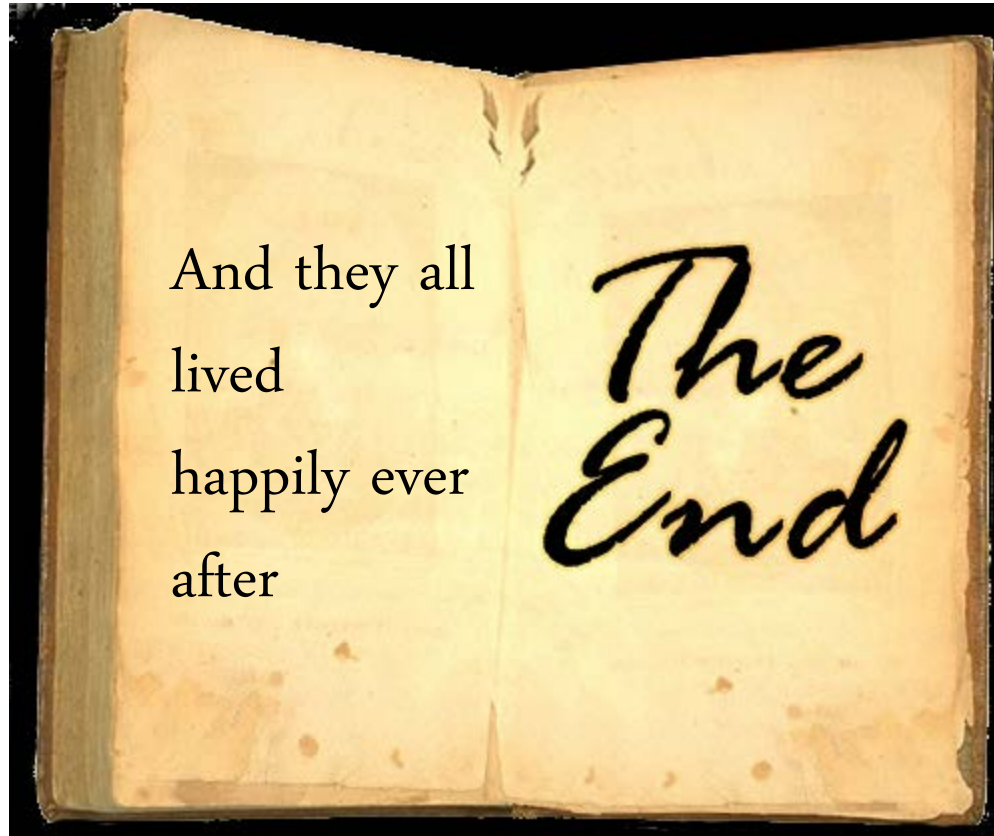
Keynote thoughts

Didier Vancutsem, Harald Burmeier, Dale Medearis, Paul Bardos

- Urban places for urban people
- Resources are a waste when in the wrong place
- There is no “I” in team
- Collaboration pays dividends
- Inspiration – not imitation – is the sincerest form of flattery
- Process and project management matters
- Look for the TOTAL value – ALL of it!
- Two ears – one mouth
- Uncertainty costs – can you afford it?
- Ensure NET capital growth
- **There are no giants’ shoulders to stand on; so look over neighbours’ shoulders**



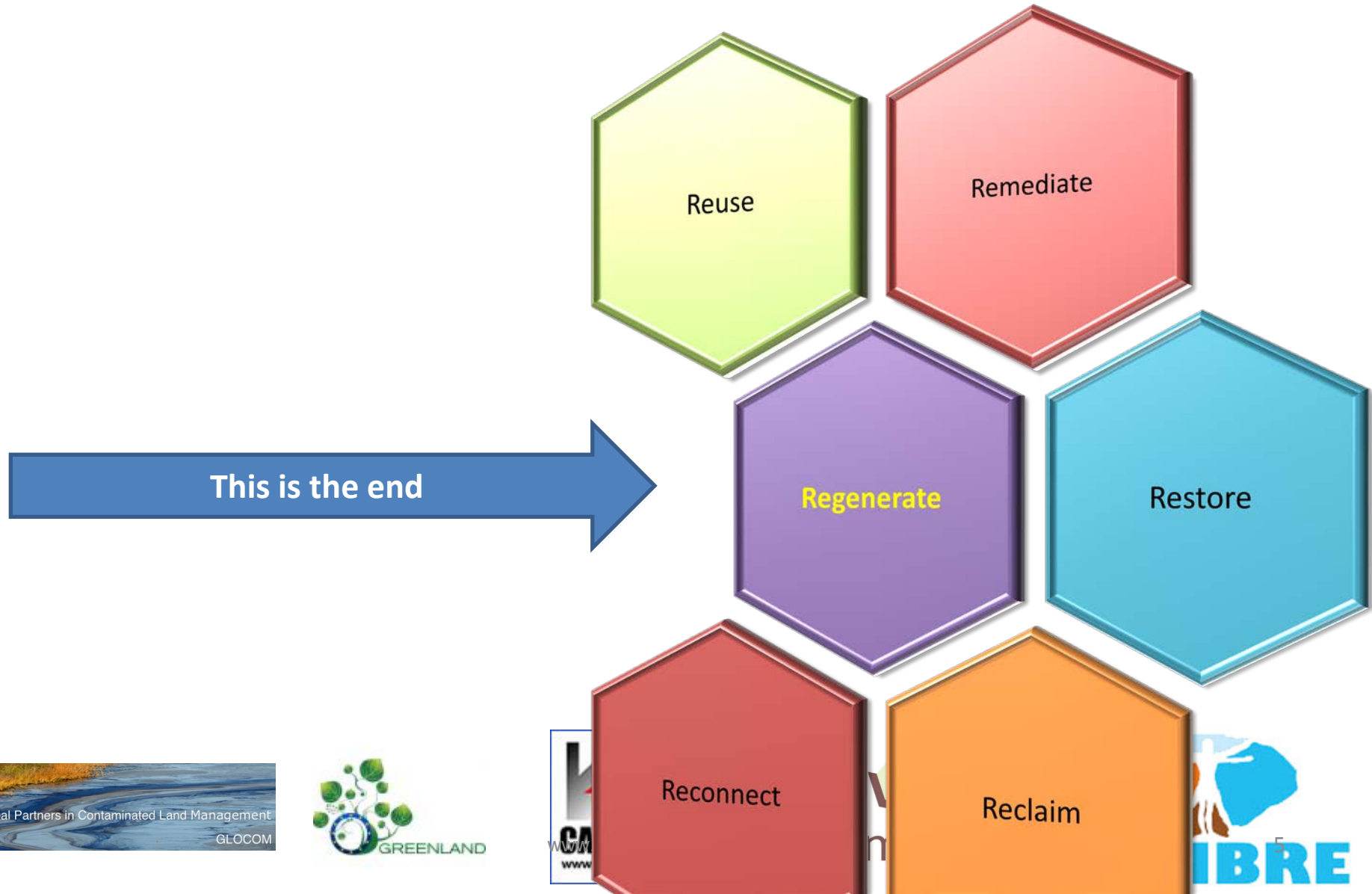
“Begin with the end in mind” Stephen Covey



www.zerobrownfields.eu



“Begin with the end in mind” Stephen Covey



The frieze above the entrance to the National Academy of Science (Washington DC)

The investigation of truth is in one way hard and in another way easy. An indication of this is found in the fact that no one is able to attain the truth entirely, while on the other hand no one fails entirely, but everyone says something true about the nature of things, and **by the union of all a considerable amount is amassed.**

Metaphysics a. 1. 993a30-993b4 (Quoting Aristotle)

<http://www.nasonline.org/about-nas/visiting-nas/nas-building/the-faade.html>



On sustainability

- The investigation of **sustainability** is in one way hard and in another way easy. An indication of this is found in the fact that no one is able to attain **sustainability** entirely, while on the other hand no one fails entirely, but everyone says something true about the nature of **sustainability**, and by the union of all a considerable amount is amassed.
- *After Metaphysics a. 1. 993a30-993b4*



Stool model

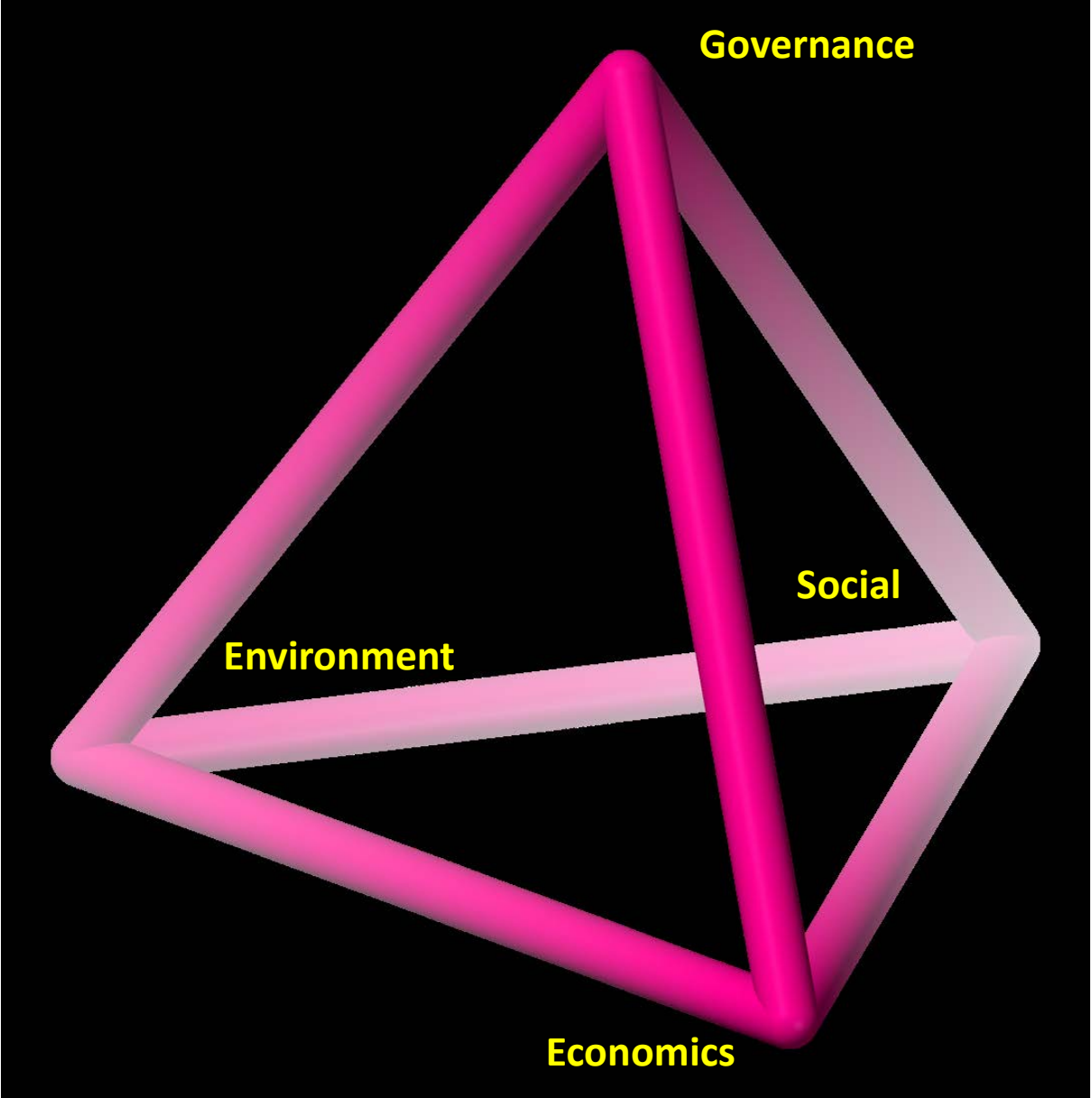


Economic

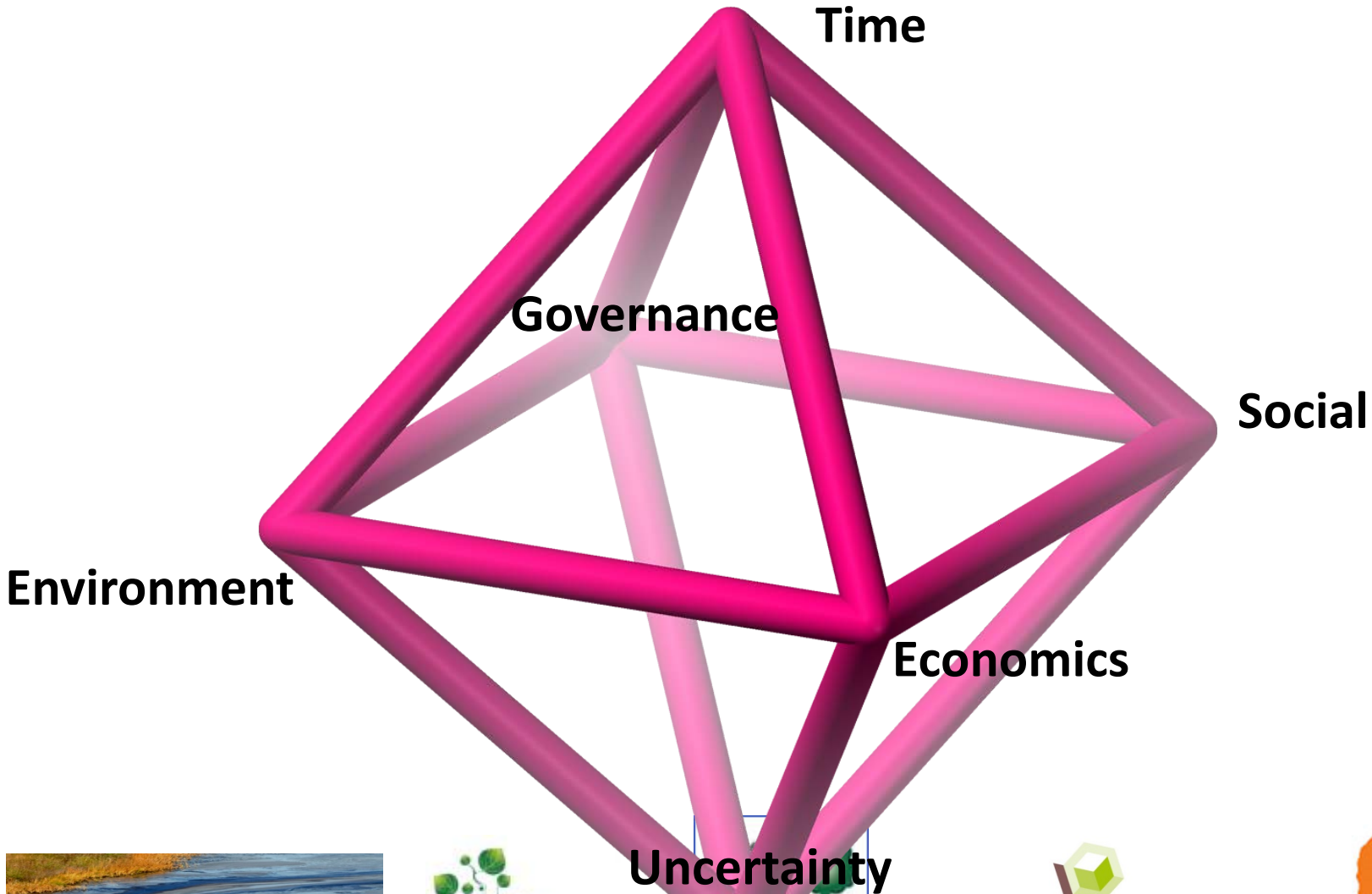
Environmental

Social



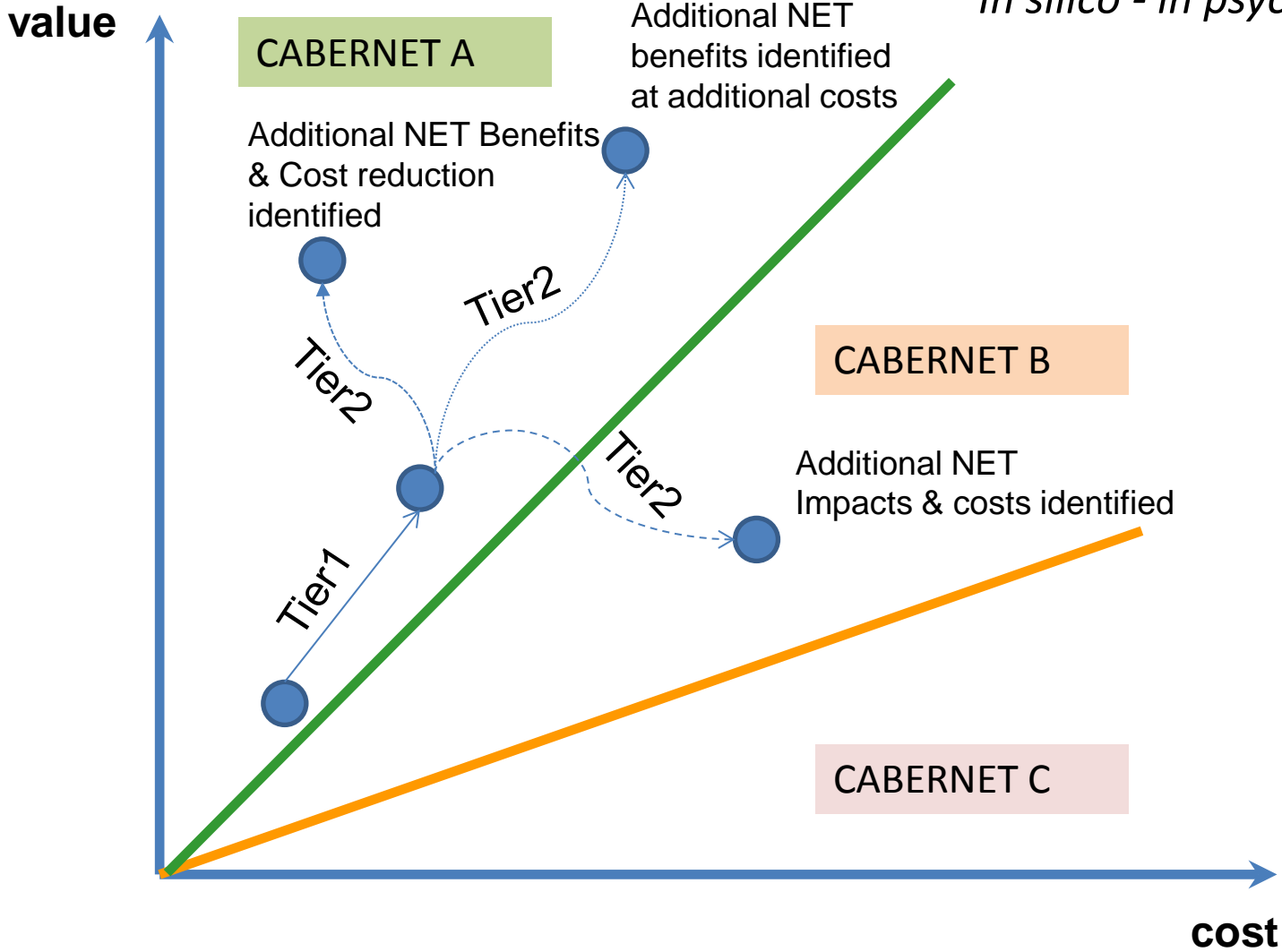


Octahedron model



CABERNET ABC Model:

In silico - in psyche project simulation



Towards the *top left*

(time spent on case studies is never wasted)

Reduce Cost

- Reuse
- Refurbish
- Recover
- Reclaim
- Risk management
- Time value of money
- 'Green' operations
- Think harder
- Decide quicker

Increase value

- Multiple land uses 24/7
- Create with the end in mind
- Increase 'bumping into each other' opportunities
- Enhance health
- Enhance safety & security
- Offer creating opportunities
- Protect biodiversity
- Carbon neutral progress



You cannot manage that which you do not understand



- Environment
- Social
- Economic
- Governance



Gute Reise – Bon Voyage – Καλο ταξιδι

sustainable urban land management is a journey not a destination

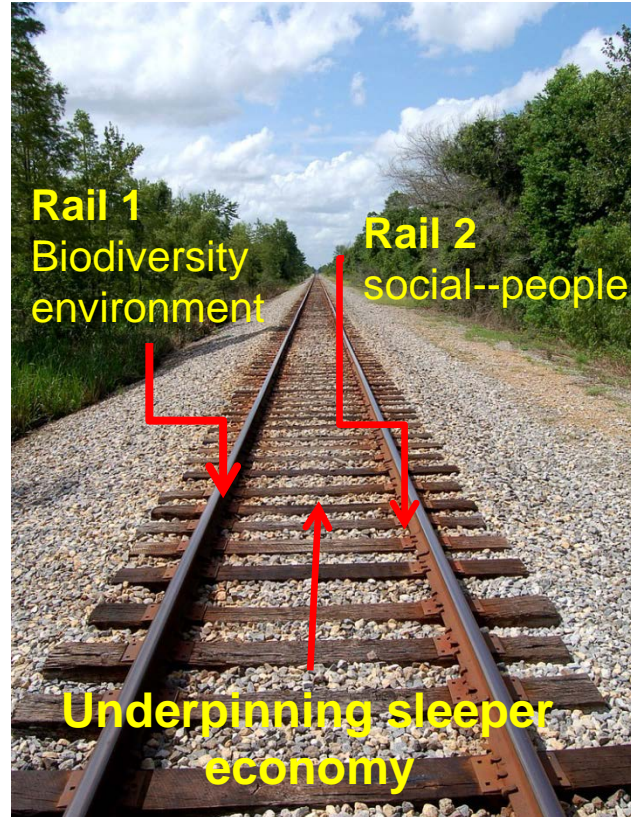
Keep in touch:

Follow @cabernet4eu on twitter

Join cabernet group on LinkedIn

Brownfields

- ☺ Provide flexibility
- ☺ Keep the urban land use cycle turning
- ☺ Available for interim uses
- ☺ Help prevent sprawl
- ☹ You can have too much of a 'good' thing



The investigation of **sustainability** is in one way hard and in another way easy... but everyone says something true about the nature of **sustainability**, and by the union of all a considerable amount is amassed.

